

CLIENT INSTALLATION GUIDE

Author: Carmelo Merino

Status: 2012-01-31

Version: 01.00

Q Group AG

Obere Bahnhofstrasse 13
CH-5507 Mellingen

Hypothekarbank Lenzburg
Account No.: 146.875.311
Clearing Nr.: 8307
VAT-No. : 573130

T: 0041(0) 31 952 66 22
F: 0041(0) 31 952 66 50
E: Sekretariat@Qgrp.com
www.Qgrp.com

1/14



Projekte | Produkte | Personal

Inhalt

1. Introduction.....	3
2. Plug-in installation.....	4
3. Q Group license	12

1. Introduction

The object of this document is to give a general idea of how plug-ins can be installed on RDz 8.0.3. For that purpose, an example plug-in was developed and installed. This final process will be showed step by step.

This guide has two parts: the first one is a general explanation of the installation process of any given plug-in in the light of an example. The second one is optional and shows the installation of a license for one of the Q Group products¹.

¹ CSAR for Changeman, CSAR for Endeavor, RDz4VSE are Q Group products.

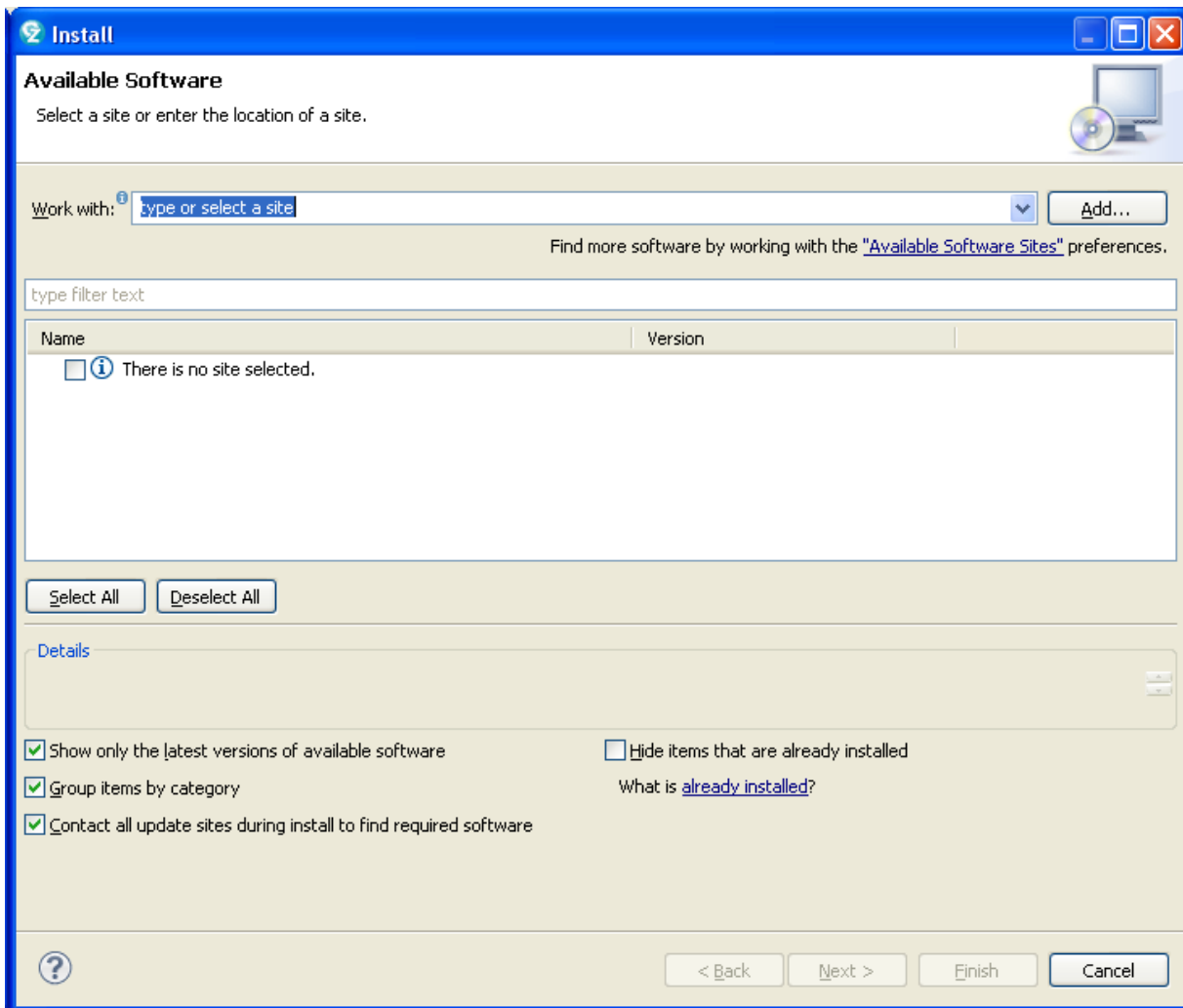


Figure 2: Install Wizard

The new dialog (Figure 3) allows the user to select the location where the Update Site for the new software is located. To that end, clicking **Local ...** a new dialog to select the folder will be showed (Figure 4).

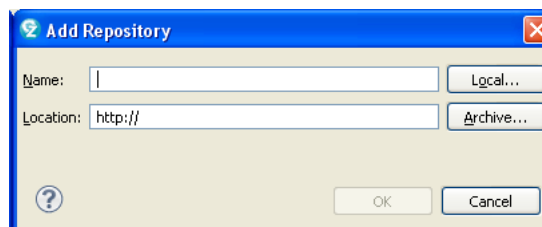


Figure 3: Add New Software Site

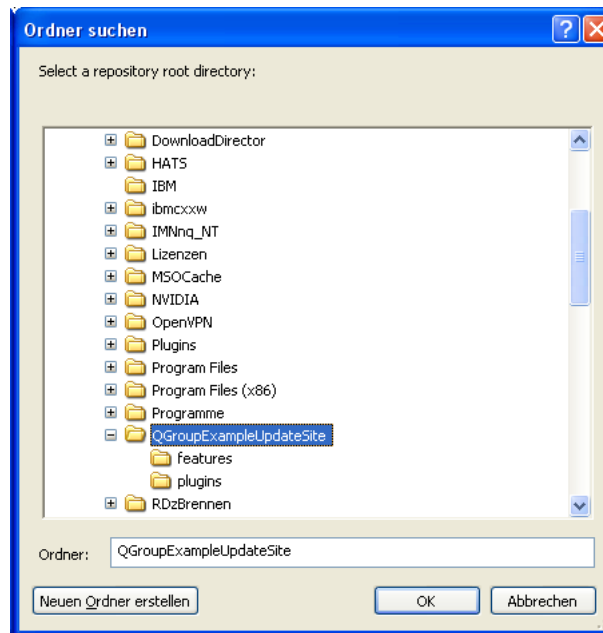


Figure 4: Select folder

The new Software Site² needs a name (Figure 6), that will be used in the drop-down box of the Installation Wizard to recognize the given Update-Site location (Figure 6).

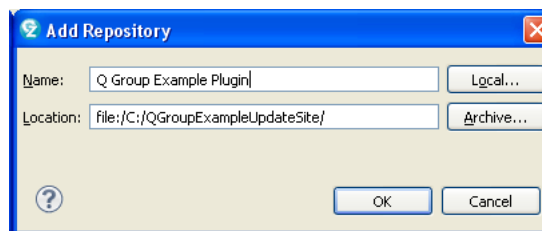


Figure 5: Name and location of the Update Site

² Although the dialog shows the title “Add Repository”, this is not a repository in the sense of the IBM Installation Manager. Actually, an Update Site is needed here. In order to avoid confusion, the term “Software Site”, as appeared in Figure 2, will be used.

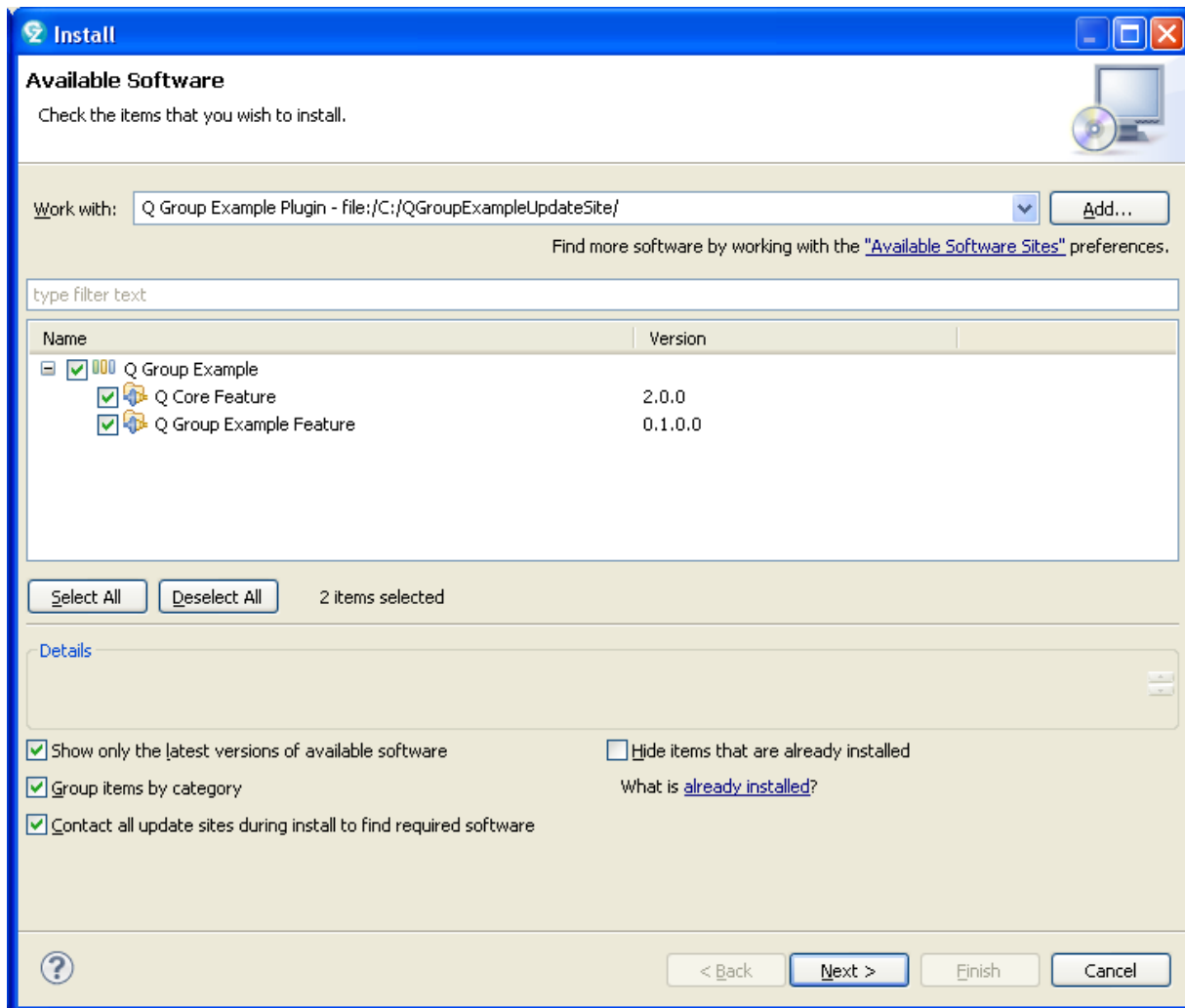


Figure 6: Available software

After selection the components to be installed and clicking **Next**, the installation program will calculate the requirements and dependencies (Figure 7).

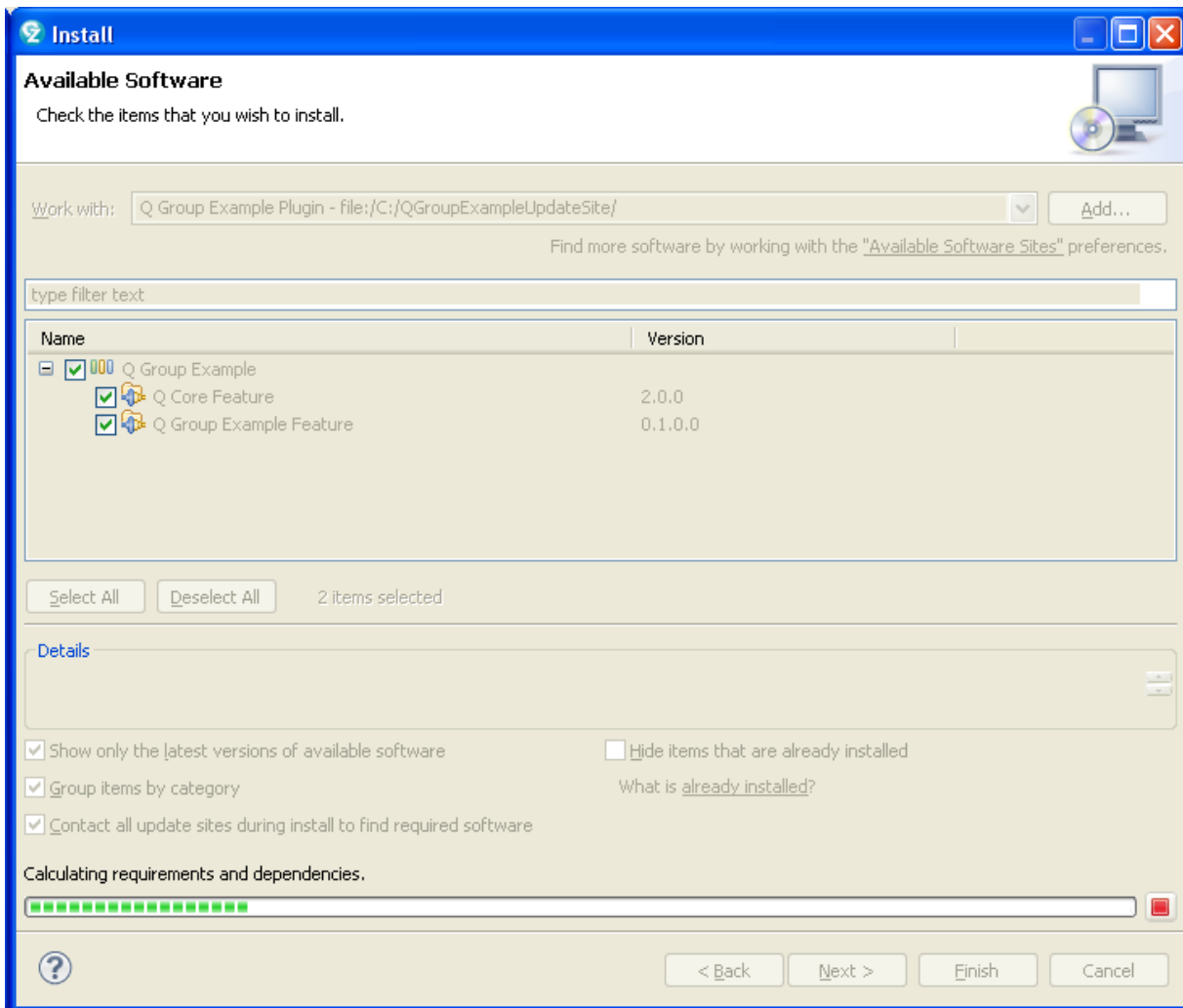


Figure 7: Calculating requirements and dependencies.

In the next step the Installation Wizard will show the installation's details (Figure 8)³.

³ If it is the first time that the components are installed, the details will be the corresponding to the components. But if one or more of them are already installed, a message will be showed in the Details area informing of that fact. If the already installed version is older than the new one, an update will be executed. If the version number of the new plug-in is equal or smaller than the older one, the component will be ignored.

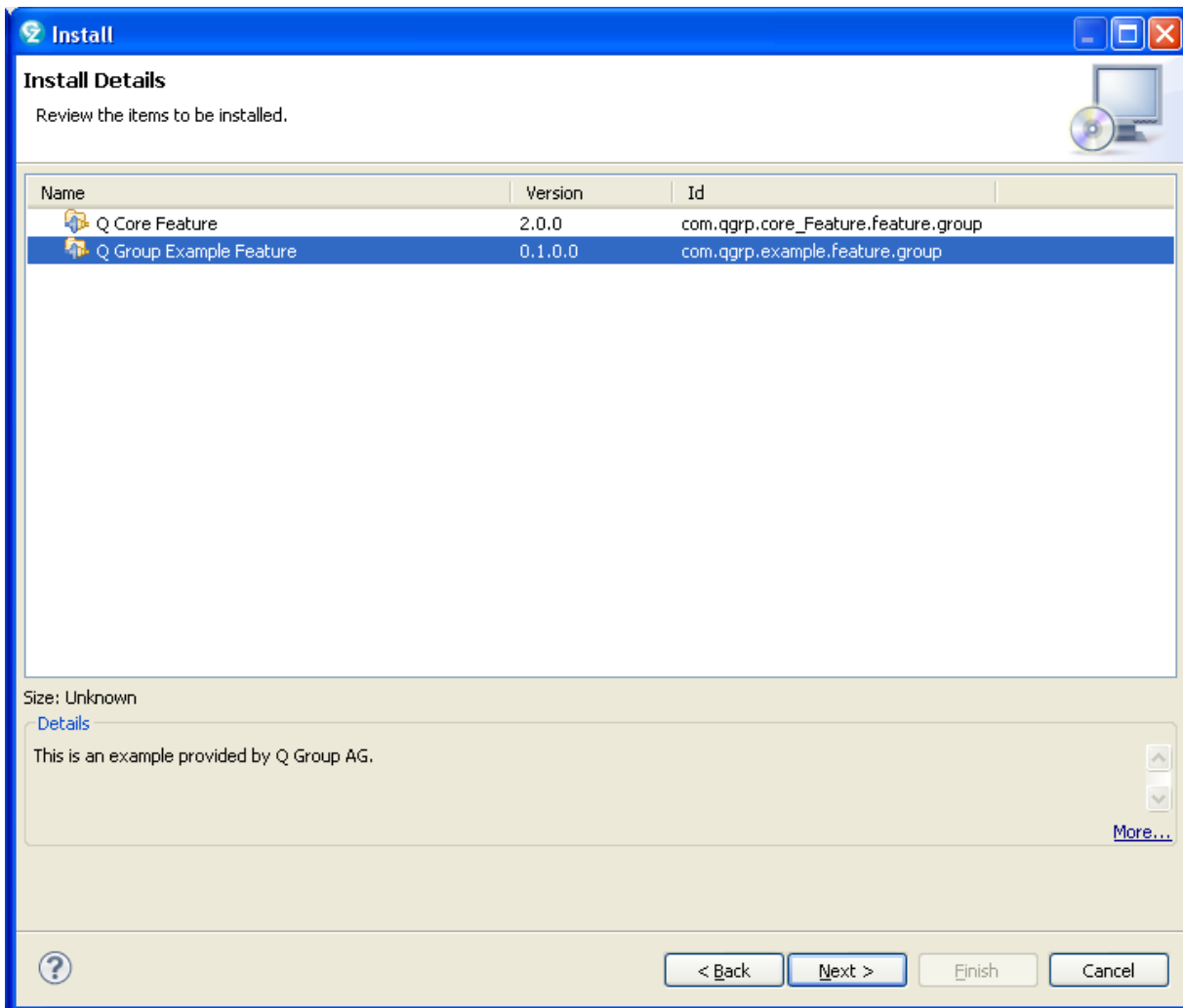


Figure 8: Install Details

The last step is the review of components' licenses (). Once the **Finish** button is pushed, the installation process will be launched.

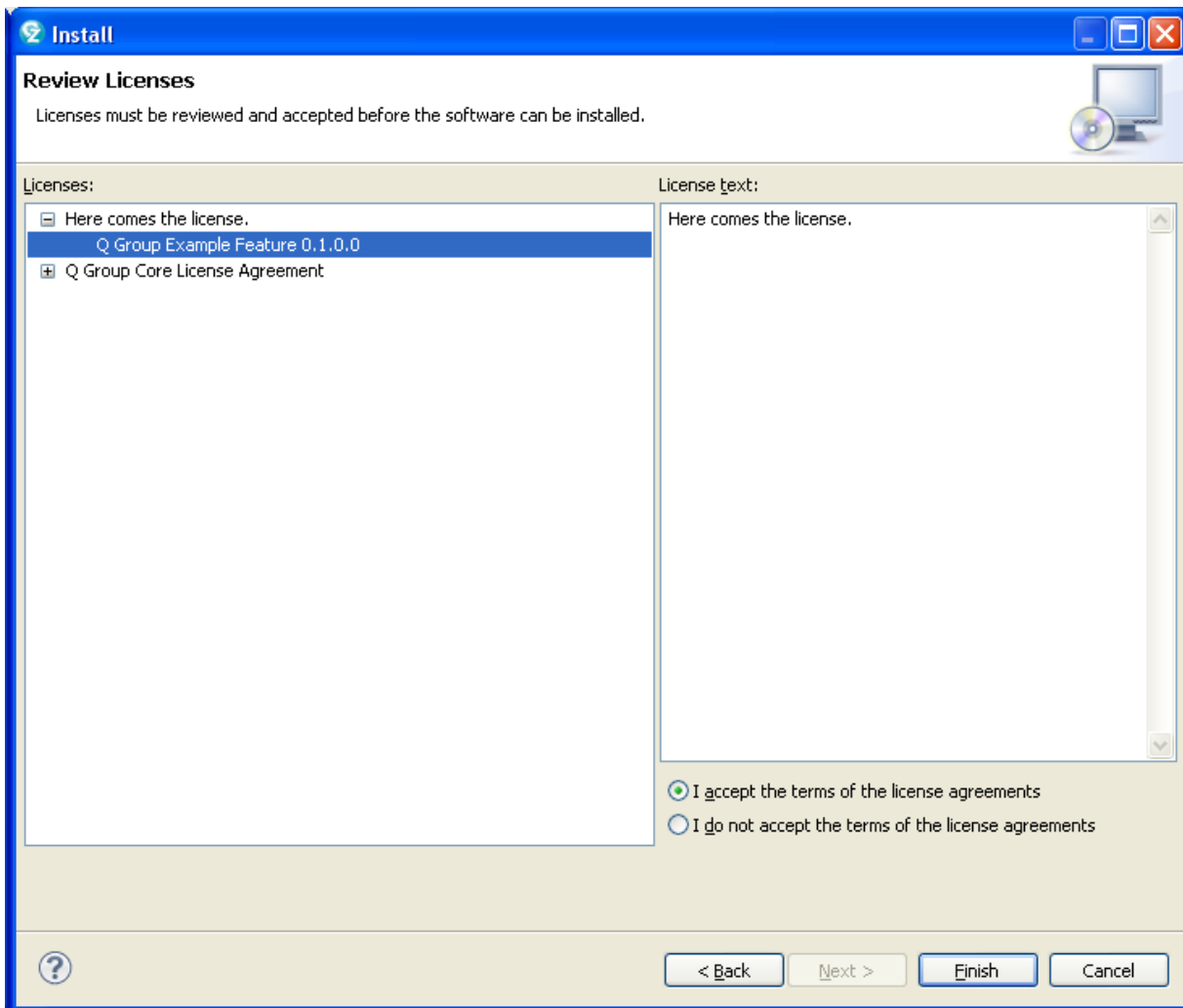


Figure 9: Components' licenses

During the installation a progress dialog will be showed (Figure 10). Sometimes a **Security Warning** could also appear (Figure 11). In this case, please click **OK**.

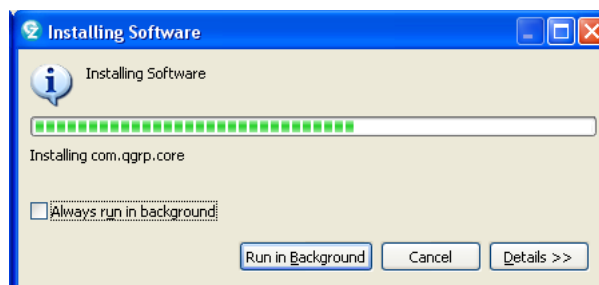


Figure 10: Progress dialog

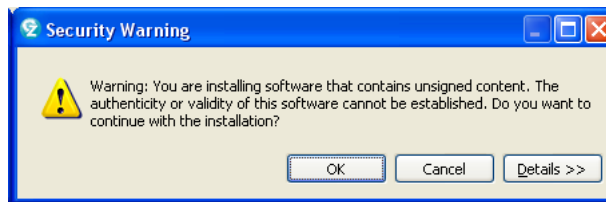


Figure 11: Security Warning

After the installation is completed RDz has to be restarted (Figure 12).

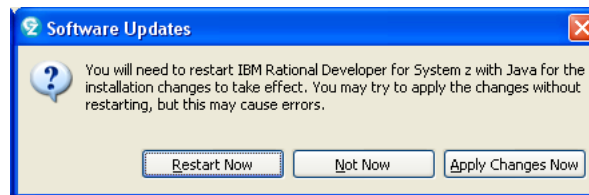


Figure 12: Restart RDz

The new plug-in is ready to be used (Figure 13).

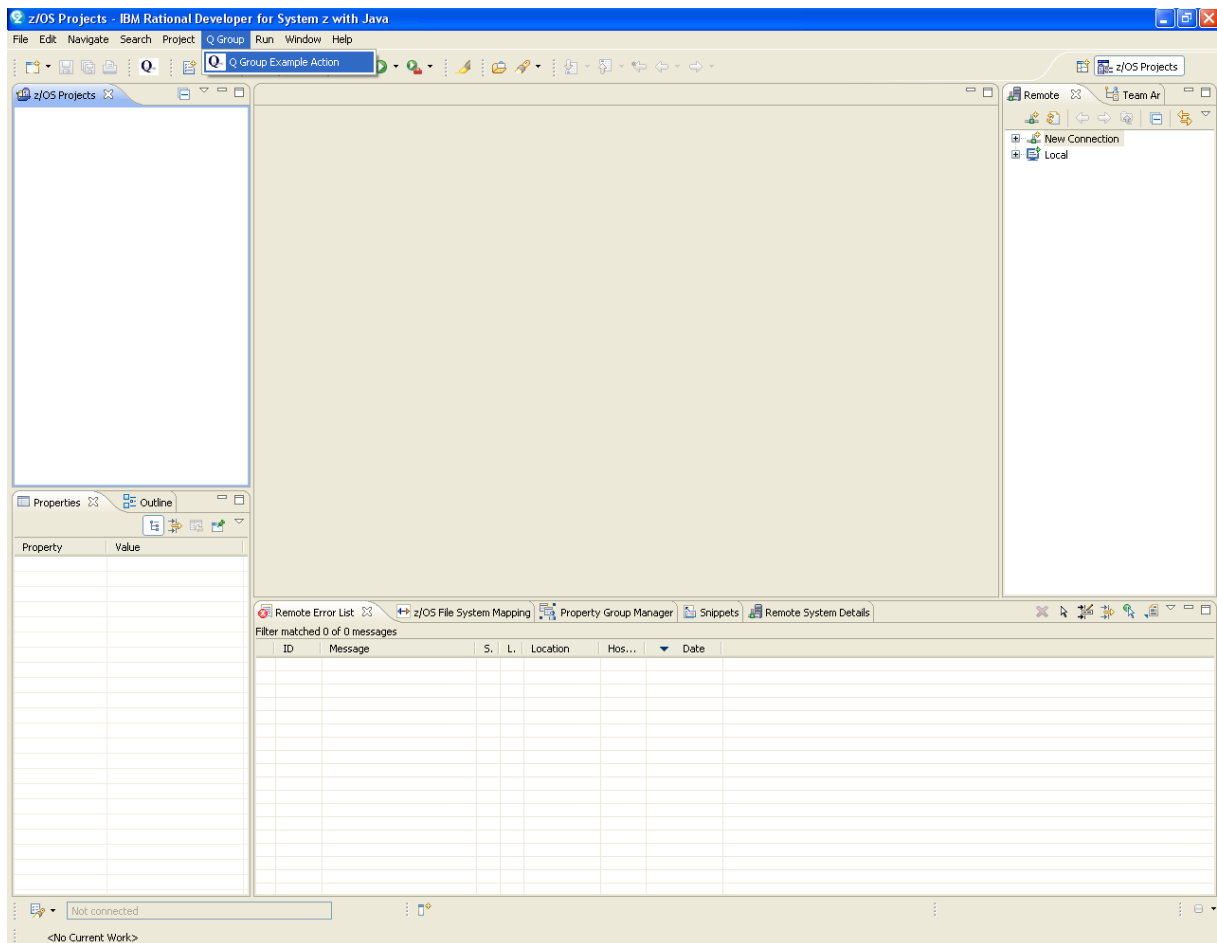


Figure 13: Q Group Example

3. Q Group license

In order to use one of the standard products of Q Group⁴, after its installation the user will have to import the proper license. This chapter will display the necessary steps to do it.

First of all, select **Help → Q Group Licenses Administration** (Figure 14).

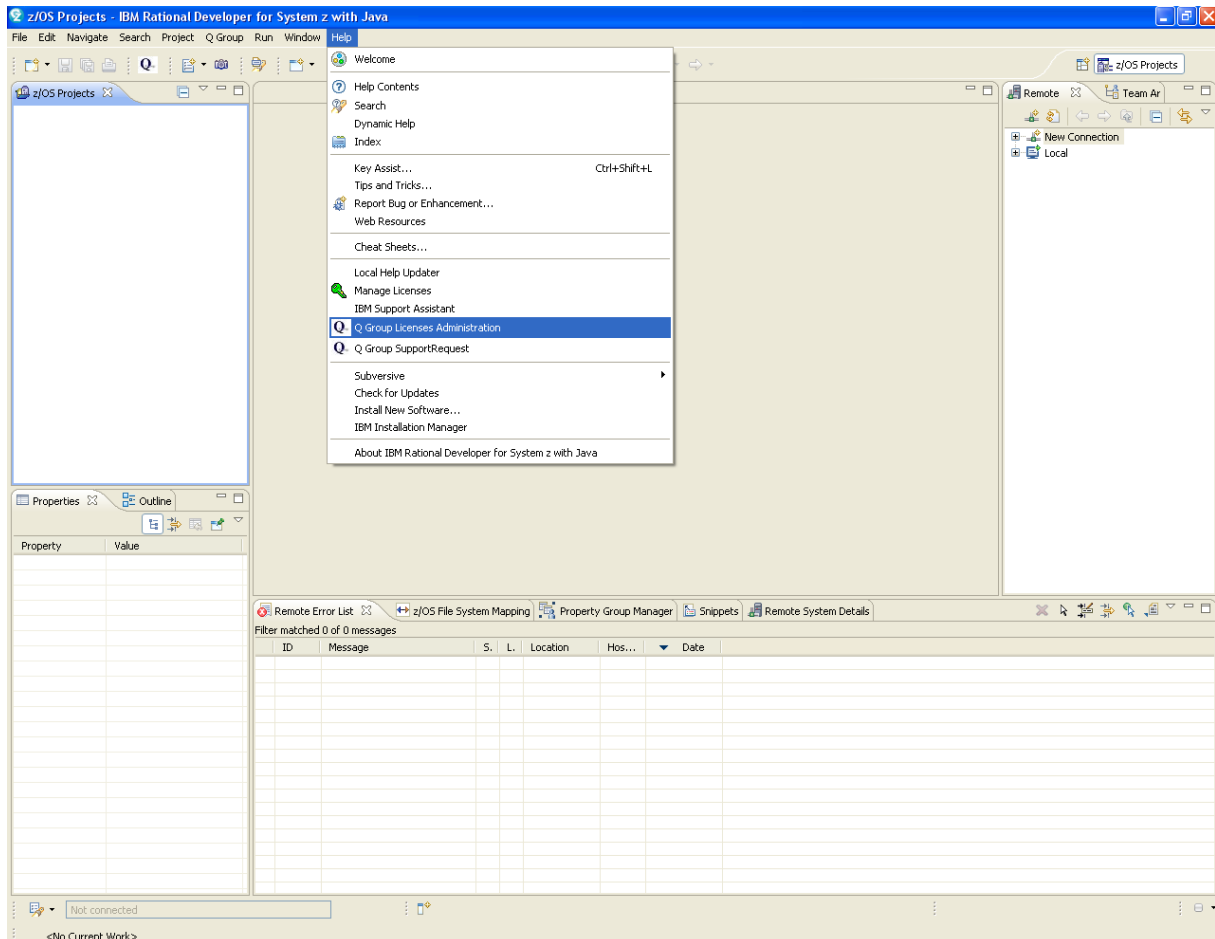


Figure 14: Q Group Licenses Administration

The Q Group Licenses Administration dialog will be opened (Figure 15). By clicking in **Import**, the user can search for and select the proper license (Figure 16).

⁴ CSAR for Changeman, CSAR for Endeavor, RDz4VSE are Q Group products.

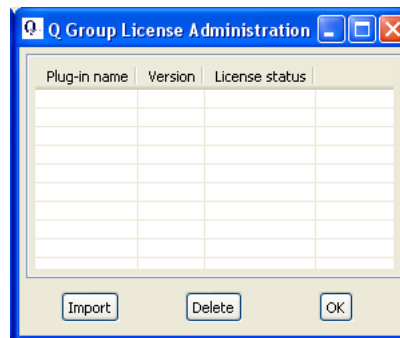


Figure 15: Q Group License Administration dialog

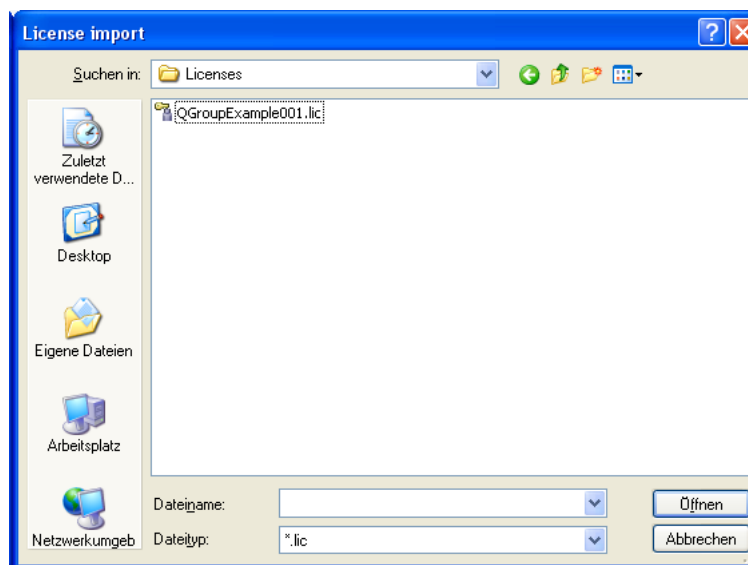


Figure 16: Import license

After clicking **Open** a popup window with general information about the license will be showed (Figure 17). A new item will appear in the License Administration dialog (Figure 18).

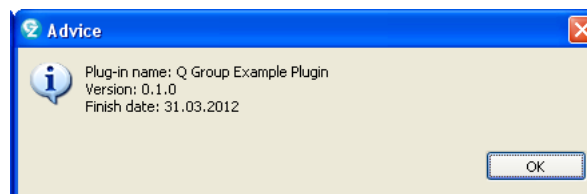


Figure 17: License Info

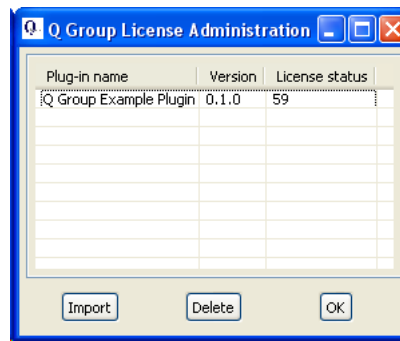


Figure 18: New license item

The license has been imported and the user can start using the product.