

Q Grpup is an international acting consulting company offering a wide range of individual solutions in project realization, software distribution, and human resources management.

Q Group is an IBM -Business-Partner for IBM Software, for Services as well as for ISV and VAP Solutions; so we sell IBM Software in own Solutions together with our software and our services.

Q Group supports enterprises and institutions in any line of business, in implementing innovative concepts and solutions for efficient transformation of their business processes.



RDZ-EXTENSION INTEGRATION OF SCM-SYSTEMS CSAR FOR ENDEVOR

The *Rational Developer for Series z* (RDz) has been proved as a powerful tool for supporting host developers within their daily work. They can easily access datasets located on the host and have a powerful editor with LPEX to modify sources.

Since the life cycle of software products is managed by using software configuration management systems (SCM systems) like CA-Endevor, these have to be integrated into RDz. To make it easy for the host developers to change to the "new world", they need a graphical user interface as similar to the usual ISPF-environment as possible.

This is all provided by **CSAR for ENDEVOR** (Carma Standard Access Repository for Endevor).

The range of functions in the current version contains:

- A search dialog providing the usual search criteria like element name (with wildcards), *CCID*, *SYSTEM*, *SUBSYSTEM*, *TYPE* or *STAGE*
- A configurable result view
- Actions for *BROWSE*, *RETRIEVE*, *ADD* and *GENERATE*
- Editors to compare elements with each other
- Editors to compare the current working copy with the element in Endevor

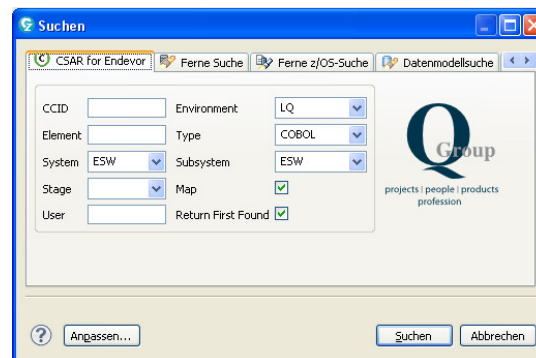
The communication between client and host is provided by the Common Access Repository Manager (CARMA) of IBM, which is already delivered with RDz.

The REXX's delivered with **CSAR for ENDEVOR** allow an easy and adapted implementation of the Endevor-API.

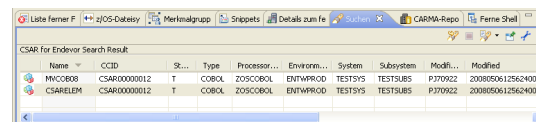
Graphical User Interface

Usually, the first action performed in Endevor by a user is to search for an element. CSAR provides a special search dialog to perform it.

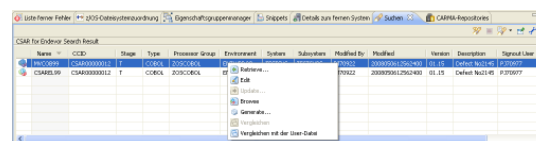
The results are presented in the Eclipse search result view:



The results are presented in the Eclipse search result view:



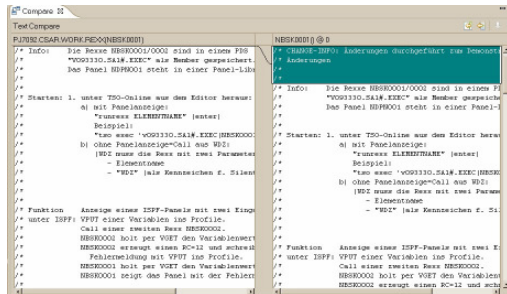
The actions are accessible from the context menu:



The parameters for an action can be specified using dialogs:



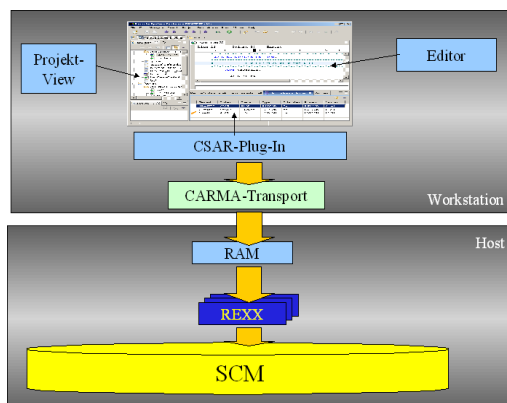
For comparing, the Eclipse compare editor will be used:



Architecture

RDz contains a component named Common Access Repository Manager (CARMA), which facilitates the connection to any number of SCM systems. Central point of the integration is the Repository Access Manager (RAM), which usually must be developed by the customer.

CSAR for ENDEVOR provides such a RAM; preconfigured, compiled and fully functional. Furthermore, some REXX's are also delivered, so that the whole implementation effort is reduced.



These REXX's can be easily extended and the user has the possibility to introduce new accesses to Endevor, for example to execute extra control checks or to implement new functions.

The plug-in can be installed using the IBM Installation Manager or via update site.

The plug-in can be installed using the *IBM Installation Manager* or via update site.

Benefits

The usage of **CSAR for ENDEVOR** allows the user:

- The integration of the SCM system CA-Endevor into RDz
- Dialogs with a high recognition factor
- Notable reduction of implementation effort
- High flexibility in the customization of host components

Only with an appropriate integration of Endevor into RDz the developer can tap the full potential of this modern IDE!



projects | people | products
 profession

More information
www.Qgrp.com

E-mail
Q-Info@Qgrp.com