

Q Group is an international acting consulting company offering a wide range of individual solutions in project realization, software distribution, and human resources management.

Q Group is an IBM Business-Partner for IBM Software, for Services as well as for ISV and VAP Solutions; so we sell IBM Software in own solutions together with our software and our services.

Q Group supports enterprises and institutions in any line of business, in implementing innovative concepts and solutions for efficient transformation of their business processes.



RDZ-EXTENSION INTEGRATION OF SCM-SYSTEMS CSAR FOR CHANGEMAN

The *Rational Developer for Series z* (RDz) has been proved as a powerful tool for supporting host developers within their daily work. They can easily access datasets located on the host and have a powerful editor with LPEX to modify sources.

Since the life cycle of software products is managed by using software configuration management systems like SERENA ChangeMan, these have to be integrated into RDz.

To make it easy for the host developers to change to the "new world", they need a graphical user interface as similar to the usual ISPF-environment as possible.

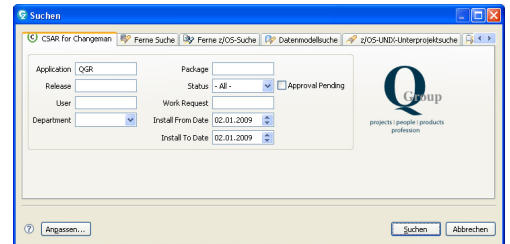
This is all provided by **CSAR for CHANGEMAN** (Carma Standard Access Repository for ChangeMan). The range of functions in the current version contains:

- A search dialog providing the usual search criteria like *APPLICATION*, *PACKAGE*, *RELEASE*, *STATUS*, *USER*, *WORKREQUEST*, *DEPARTMENT* or *DATE*
- A configurable result view
- Actions on the package level
- Actions on the component level
- Editors to compare elements with each other
- Editors to compare the current working copy with the element in ChangeMan (package or baseline)

The communication between client and host is provided by the Common Access Repository Manager (CARMA) of IBM, which is already delivered with RDz. The REXX's delivered with **CSAR for CHANGEMAN** allow an easy and adapted implementation of the ChangeMan-API.

Graphical User Interface

Usually, the first action performed in ChangeMan by a user is to search for a package. CSAR provides a special search dialog to perform it.



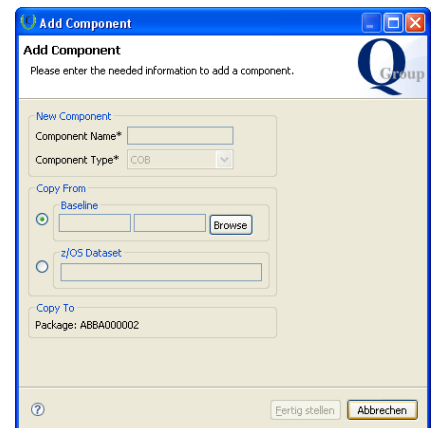
The results are presented in the Eclipse search result view:

Package ID	Status	Install Date	Package Level	Work Request	Title	Release	Priority	Auth	Creator	Department	Release
ABBA00002	DEV	20100714	UNB1		TEST					RDZ/ET	
ABBA00003	DEV	20100714	UNB1		TEST					RDZ/ET	
CCR 000001	DEV	20090220	SNPL	PGM 0.0.0.0	EPF 200903	DEV6	45 TEST	00	LUZ2456	DEPT	REL 2.0
CCR 000002	DEV	20090220	SNPL	PGM 0.0.0.0	EPF 200904	DEV6	45 TEST	00	LUZ2456	DEPT	REL 1.0
CCR 000003	DEV	20090220	SNPL	PGM 0.0.0.0	EPF 200906	DEV6	45 TEST	12	LUZ2456	DEPT	REL 3.0
CCR 000004	PRZ	20090220	SNPL	PGM 0.0.0.0	EPF 201006	DEV6	45 TEST	3	LUZ2456	DEPT	REL 3.0
CCR 000005	DEV	20100811	SNPL	CHWKR01Q	THARC/CS P...	TEST			THARC/CS	CHRG	CHRG/EA
CCR 000006	DEV	20100814	SNPL		THARC/CS P...	TEST			THARC/CS		
CCR 000007	DEV	20100814	SNPL		THARC/CS P...	TEST			THARC/CS		
CCR 000008	DEV	20100807	SNPL		TEST				THARC/CS		

The actions are accessible from the context menu:

Package ID	Status	Install Date	Package Level	Work Request	Title	Release	Priority	Auth	Creator	Department	Release
ABBA00001	DEV	20100713	UNB1		TEST					RDZ/ET	
ABBA00002	DEV	20100714	UNB1		TEST					RDZ/ET	
ABBA00003	DEV	20100714	UNB1		TEST					RDZ/ET	
CCR 000001	DEV	20090220	SNPL	PGM 0.0.0.0	EPF 200903	DEV6	45 TEST	00	LUZ2456	DEPT	REL 2.0
CCR 000002	DEV	20090220	SNPL	PGM 0.0.0.0	EPF 200904	DEV6	45 TEST	00	LUZ2456	DEPT	REL 1.0
CCR 000003	DEV	20090220	SNPL	PGM 0.0.0.0	EPF 200906	DEV6	45 TEST	12	LUZ2456	DEPT	REL 3.0
CCR 000004	PRZ	20090220	SNPL	PGM 0.0.0.0	EPF 201006	DEV6	45 TEST	3	LUZ2456	DEPT	REL 3.0
CCR 000005	DEV	20100811	SNPL	CHWKR01Q	THARC/CS P...	TEST			THARC/CS	CHRG	CHRG/EA
CCR 000006	DEV	20100814	SNPL		THARC/CS P...	TEST			THARC/CS		
CCR 000007	DEV	20100814	SNPL		THARC/CS P...	TEST			THARC/CS		
CCR 000008	DEV	20100807	SNPL		TEST				THARC/CS		
CCR 000009	DEV	20100815	COPP		THARC/CS P...	TEST			THARC/CS		
OT1000000	DEV	20100811	SNPL	CHWKR01Q	CHW 100%	TEST			CHW 100%		
OT1000002	DEV	20100815	SNPL		CHW 100%	TEST			CHW 100%		
OT1000003	DEV	20100815	SNPL		CHW 100%	TEST			CHW 100%		
OT1000004	DEV	20100815	SNPL		CHW 100%	TEST			CHW 100%		

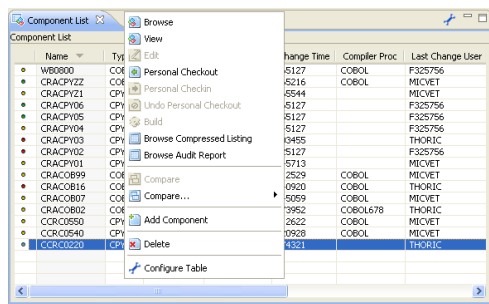
The parameters for an action can be specified using dialogs:



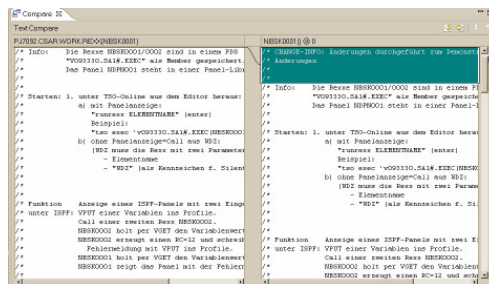
The components of a package are shown in an own view:

Name	Type	Status	Change Date	Change Time	Compiler Proc	Last Change User
WB0000	COB	ACTIVE	20080906	065127	COBOL	F325756
CRACP2Z	COB	CHECKOUT	20090427	065216	COBOL	MICVET
CRACP21	CPY		20090427	065544		
CRACP06	CPY	ACTIVE	20080906	065127		F325756
CRACP05	CPY	ACTIVE	20080905	051127		F325756
CRACP04	CPY	ACTIVE	20080904	045127		F325756
CRACP03	CPY	CHECKOUT	20091201	103455	THORIC	
CRACP02	CPY	ACTIVE	20080902	025127		F325756
CRACP01	CPY	CHECKOUT	20100130	145713	MICVET	
CRAC0899	COB	CHECKOUT	20100227	112529	COBOL	MICVET
CRAC0816	COB	CHECKOUT	20091202	040920	COBOL	THORIC
CRAC0807	COB	CHECKOUT	20090425	145059	COBOL	MICVET
CRAC0802	COB	CHECKOUT	20100203	073952	COBOL678	THORIC
CCRC0550	CPY	CHECKOUT	20100227	112622	COBOL	MICVET
CCRC0540	CPY	ACTIVE	20100227	120928	COBOL	MICVET
CCRC0220	CPY	CHECKOUT	20100210	074521	THORIC	

The possible actions for components are also accessible from the context Menu:



For comparing, the Eclipse compare editor will be used:

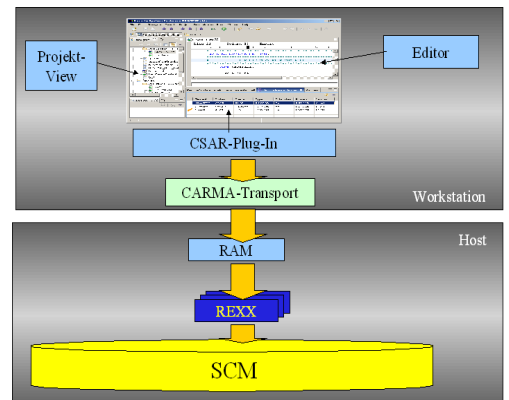


Architecture

RDz contains a component named Common Access Repository Manager (CARMA), which facilitates the connection to any number of SCM systems. Central point of the integration is the Repository Access Manager (RAM), which usually must be developed by the customer.

CSAR for CHANGEMAN provides such a RAM; preconfigured, compiled and fully functional. Furthermore, some REXX's are also delivered, so that the whole implementation effort is reduced.

These REXX's can be easily extended and the user has the possibility to introduce new accesses to ChangeMan, for example to execute extra control checks or to implement new functions.



The plug-in can be installed using the IBM Installation Manager or via update site.

Benefits

The usage of **CSAR for CHANGEMAN** allows the user:

- The integration of the SCM system SERENA ChangeMan into RDz
- Dialogs with a high recognition factor
- Notable reduction of implementation effort
- High flexibility in the customization of host components

Only with an appropriate integration of ChangeMan into RDz the developer can tap the full potential of this modern IDE!



projects | people | products
 profession

More information
www.Qgrp.com

E-mail
Q-Info@Qgrp.com